

# Team Spirit Style and Sizing Guide



## Adult Fitted Baby Doll T-shirt

- Our most popular shirt style – Petite, closer-fitting style fits flatter women's curves. Not pre-shrunk
- 100% Cotton, Made in the USA
- Use size chart 1



## Adult Fitted Baby Doll V-neck

- Petite sizes true to fit
- 100% Cotton, pre-shrunk
- Made by Bella; black is slightly lighter than our other apparel on this page
- Use size chart 3



## Adult Fitted Tank Top

- 100% baby rib combed cotton is form-fitting but not tight
- Made in the USA, will shrink up to one size
- Use size chart 1



## Adult Fitted Long Sleeve shirt

- Form-fitting but not tight
- 100% lightweight Jersey cotton, Made in the USA
- Use size chart 1



## Adult Fitted Spaghetti Tank

- 95% cotton, 5% spandex;
- Built-in shelf lining for support; adjustable straps
- Use size chart 3



## Adult Standard Unisex T-shirt

- A larger, looser fit with longer sleeves and smaller neck than our Fitted Baby Doll Tee
- 100% Cotton, Made in the USA
- Use size chart 2



## Adult Standard Unisex V-neck

- A larger, looser fit with longer sleeves and smaller neck than our Fitted V-neck
- 100% Cotton, Made in the USA
- Use size chart 2



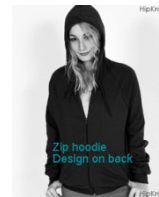
## Adult Standard Long Sleeve shirt

- A larger, looser fit with roomier sleeves and smaller neck than our Fitted Long Sleeve shirt
- 100% cotton, Made in the USA
- Use size chart 2



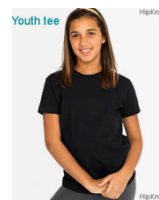
## Adult Pullover Hoodie

- Matching hood drawstring and kangaroo pocket; 100% California Fleece cotton, Made in the USA
- Design on front
- Use size chart 2



## Adult Zip Front Hoodie

- Matching hood drawstring and kangaroo pocket; 100% California Fleece cotton, Made in the USA
- Design on back
- Use size chart 2



## Youth Unisex T-shirt

- Great fit for girls
- 100% fine jersey cotton construction, Made in the USA
- Not pre-shrunk: Runs small
- Use size chart 4

1 Adult Petite/Fitted shirts by American Apparel						
	S	M	L	XL	2XL	
Dress size		2-4	6-8	10-12	14-16	
Chest (inches)	N/A	32-34	36-38	40-42	44-46	
Waist (inches)		27-28	30-32	33-35	36-38	

2 Adult Standard/Unisex shirts by American Apparel						
	S	M	L	XL	2XL	
Dress size	10-12	14-16	18-20	22-24	26-28	
Chest (inches)	34-36	38-40	42-44	46-48	48-50	
Waist (inches)	30-32	32-33	33-34	36-38	40-42	

3 Adult Petite/Fitted shirts by Bella						
	S	M	L	XL	2XL	
Dress size	0-4	4-8	8-10	10-12	12-14	
Chest (inches)	31-33	34-36	37-39	39-41	41-43	
Waist (inches)	28-30	30-32	32-34	35-36	36-38	

4 Youth Unisex shirts by American Apparel						
	4	6	8	10	12	
Weight (lbs)	30-36	37-41	42-48	49-57	59-72	
Height (inches)	33-37	37-42	43-47	48-52	53-57	
Chest (inches)	20	22	24	25	26	

### Notes:

- Chest: measure under arms around fullest part of bust. Waist: Measure around natural waist with a loose tape.
- All shirts washer safe, machine wash warm; Line dry recommended, if using dryer turn shirt inside out.